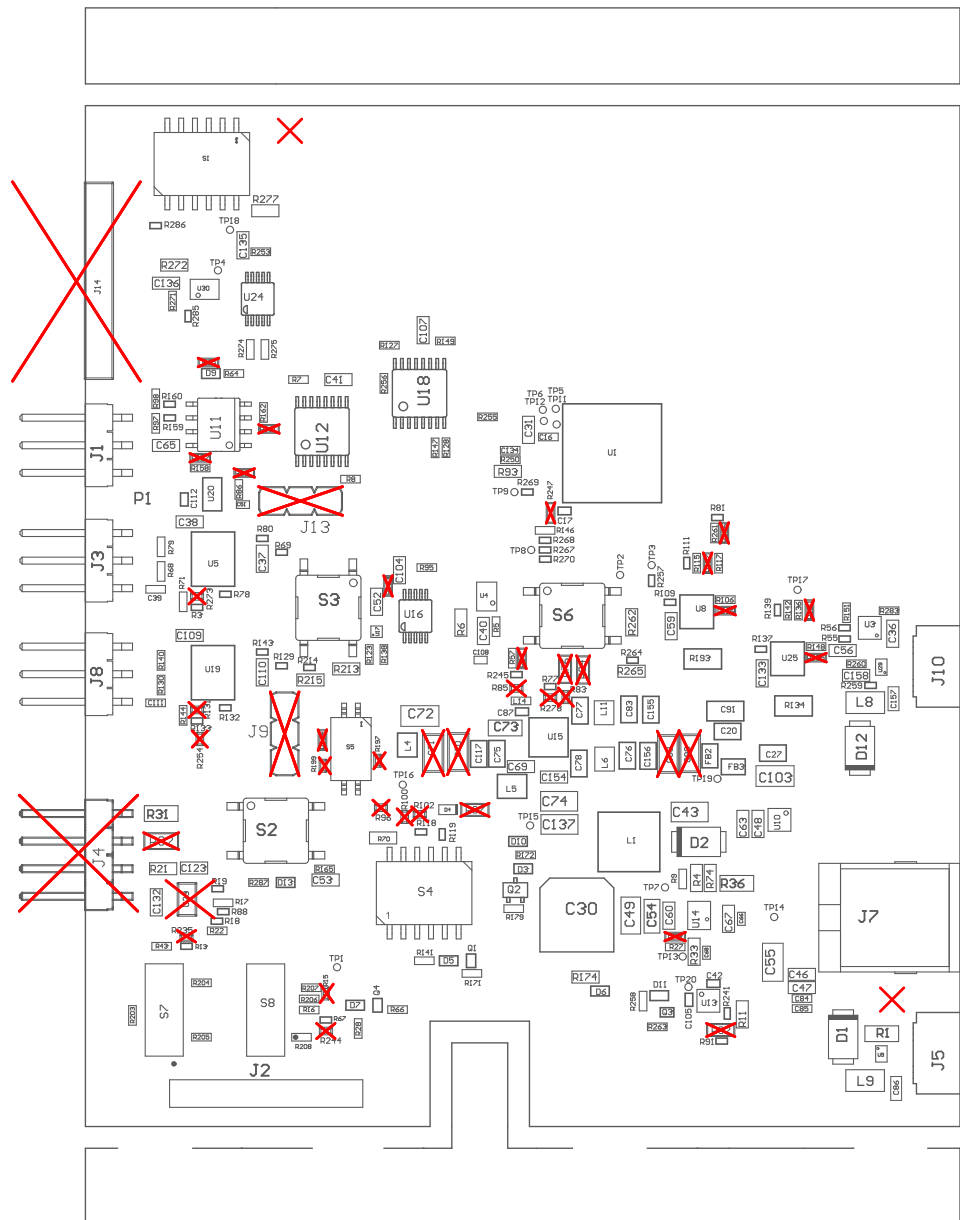


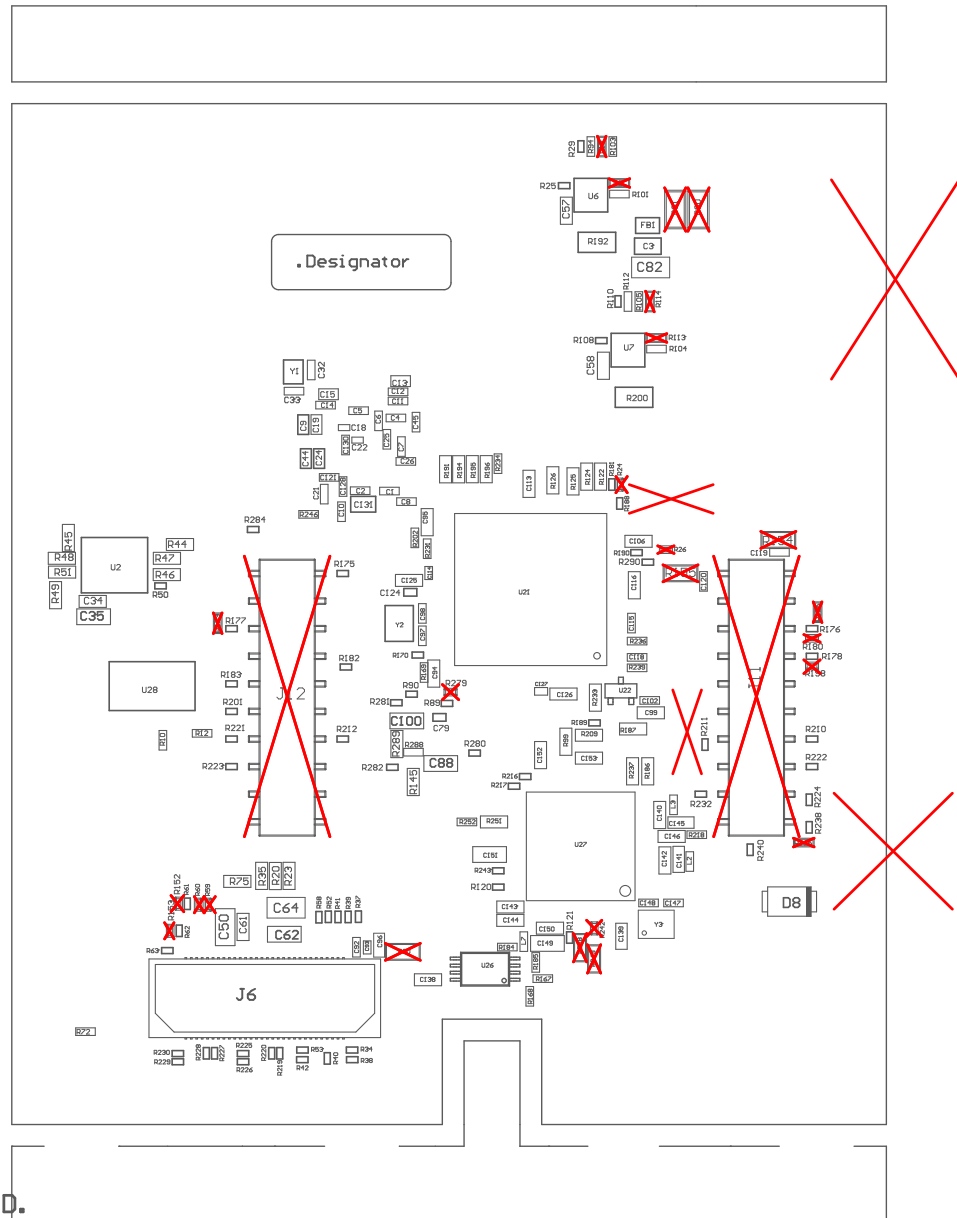
Z21 ■ Install label in silkscreened box after final wash. Text shall be 8 pt font. Text shall be per the Label Table in the PDF schematic.
Z22 ■ These assemblies are ESD sensitive, ESD precautions shall be observed.
Z23 ■ These assemblies must be clean and free from flux and all contaminants. Use of no clean flux is not acceptable.
Z24 ■ These assemblies must comply with workmanship standards IPC-A-610 Class 2, unless otherwise specified.
Z25 ■ INDICATION FOR COMPONENTS D* ARE GIVEN AT THEIR CATHODE SIDE.

COMPONENTS MARKED 'DNP' SHOULD NOT BE POPULATED.

ASSEMBLY VARIANT: 02_IWR



| | | | |
|----------------------------------|------------------|-----------------------|-------------------|
| PCB VIEWED FROM TOP SIDE | BOARD #: PROC182 | REV: A | SUN REV: 4173 |
| Assembly Layer Top | TID #: | N/A | |
| PLOT NAME = Top Assembly Drawing | GENERATED | : 01-04-2025 12:28:30 | TEXAS INSTRUMENTS |



| | | | |
|-------------------------------------|---------------------------------|-------------------|---------------|
| PCB VIEWED FROM BOTTOM SIDE | BOARD #: PROC182 | REV: A | SUN REV: 4173 |
| Assembly Bottom Layer | TID #: N/A | | |
| PLOT NAME = Bottom Assembly Drawing | GENERATED : 01-04-2025 12:28:31 | TEXAS INSTRUMENTS | |